



COMMUNITY ENTERPRISE EDUCATION EMPLOYMENT

2026

ROOM HIRE

CE3  
CONLEACH ROAD  
PARKLANDS SITE  
SPEKE  
LIVERPOOL  
L24 0TY

[WWW.CE3.ORG.UK](http://WWW.CE3.ORG.UK)

[INFO@CE3.ORG.UK](mailto:INFO@CE3.ORG.UK)

# INTRODUCTION

Based in the heart of the Speke community, our centre offers flexible, multifunctional spaces available to hire for local businesses, organisations, and entrepreneurs.

Our rooms are suitable for a wide range of professional needs, including hot desking, meetings, conferences, workshops, and events. We aim to provide warm, welcoming and productive environments, with flexible room configurations to suit your requirements.

Our relaxed Bistro area provides an informal space for a quick chat or a coffee catch-up and works well as breakout space during meetings or events. We also have a garden with seating available for breakout use.



Each of our rooms is named after an iconic and influential woman: Parton (Dolly), Cohn (Marianne), Pankhurst (Emmeline) and Kahlo (Frida), reflecting the inspirational tone of our centre, where you'll find motivational quotes and imagery throughout. Our bright, accessible spaces act as a blank canvas, ready for you to make your own during your time with us.

## KEY FEATURES

- Flexible rooms for meetings, workshops, conferences and events
- Bright, heated and well-ventilated spaces
- Accessible toilet available
- Entrance and all rooms are wheelchair friendly
- Bistro and garden area for coffee and catch ups / break out space
- Catering available for meetings and events
- Free on-site parking for you and your guests
- Presentation equipment available

# KAHLO SUITE



- Intimate room suitable for smaller meetings, solo working or content creation
- A-board and projector available
- Tea / Coffee / Hot Water facilities at £2.00 per head half day. £3.00 per head full day
- Break out lounge space



Boardroom: up to 6 plus trainer



£100.00 full day + VAT (9.00-17.00)

£60.00 half day +VAT (9.00-12.30 / 13.00-17.00)



# COHN SUITE



- Intimate multifunctional room, suitable for smaller meetings and training
- A-board and Projector available
- Tea / Coffee / Hot Water facilities at £2.00 per head half day. £3.00 per head full day
- Break out lounge space



Classroom: 12 plus trainer  
theatre: 16 plus trainer



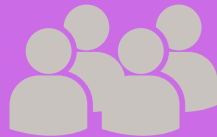
£100.00 full day + VAT (9.00-17.00)  
£70.00 half day + VAT (9.00-12.30 / 13.00-17.00)



# PANKHURST SUITE



- Medium-sized multifunctional room suitable for smaller meetings and training
- A-board and Projector available
- Tea / Coffee / Hot Water facilities at £2.00 per head half day. £3.00 per head full day
- Break out lounge space



Classroom: 14 plus trainer  
Theatre: 20 plus trainer



£110.00 full day + VAT (9.00-17.00)  
£75.00 half day + VAT (9.00-12.30 / 13.00-17.00)



# PARTON SUITE



- Spacious room suitable for a variety of purposes
- Large dry wipe board
- A-board and Projector available
- Tea / Coffee / Hot Water facilities at £2.00 per head half day. £3.00 per head full day
- Break out lounging space



Classroom: 24 plus trainer  
Theatre: 30 plus trainer



£120.00 full day + VAT (9.00-17.00)  
£80.00 half day + VAT (9.00-12.30 / 13.00-17.00)



# BOOKING

Email or pop into the centre to book or to view our rooms.

Bookings are confirmed upon receipt of a valid PO number or payment confirmation.

## BOOKING T&C'S:

- 24 hours notice is preferable prior to your desired booking date.
- Cancellations 7 days in advance will receive a full refund. Cancellations 7 days to 24 hours in advance will receive a 50% refund. Cancellations for events starting within 24 hours are non-refundable.
- Operating hours are 9am - 5pm. You will have access to your booked room for the entire time period booked. Bookings outside of these times are available on request.
- Our centre is a respectful, working environment, therefore the use of loud music, defamatory or abusive language, violence, inappropriate behaviour are prohibited. Anyone under the age of 16 must be accompanied by an appropriate adult.
- Individuals are responsible for their own possessions whilst on site.

## ACCESSIBILITY:

Our rooms and garden are fully accessible and wheelchair friendly, with accessible restroom facilities available on site.



## GET IN TOUCH:

**CE3**  
**CONLEACH ROAD**  
**PARKLANDS SITE**  
**SPEKE**  
**LIVERPOOL**  
**L24 0TY**  
**[WWW.CE3.ORG.UK](http://WWW.CE3.ORG.UK)**  
**[INFO@CE3.ORG.UK](mailto:INFO@CE3.ORG.UK)**



COMMUNITY ENTERPRISE EDUCATION EMPLOYMENT